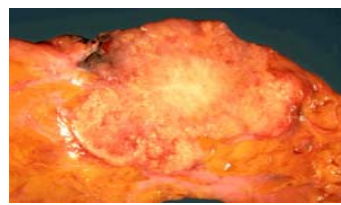


Functional Proteomics by Reverse Phase Protein Array



Frozen Tissue



Cultured Cells

Protein Extraction

Protein Extraction

Adjust protein concentration
and denature protein by SDS

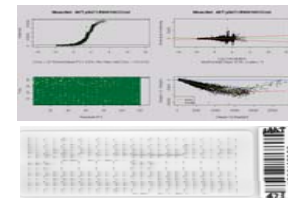
Serial dilution
(2-fold for 5 dilutions)
>1000 control samples for Quality Control,
Spatial Correction and Merging data across slides

Array on nitrocellulose coated slides

Probe with validated antibodies,
Signal detection by
DAB colorimetric reaction

Spot density determination by **Array Pro**
(Automatic spot finding and background subtraction)

Protein concentration determination
By **Super Curve Fitting**

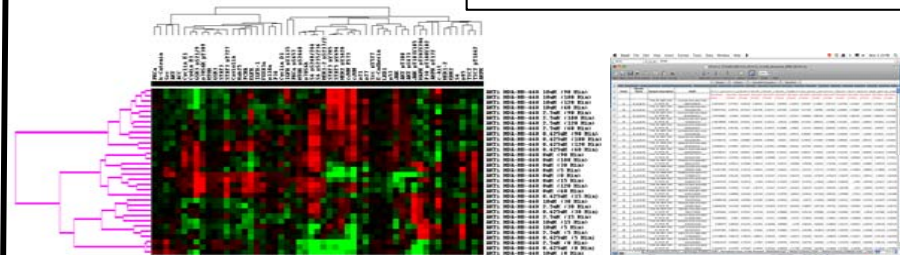


Spatial Correction
Quality Control
Curve Fitting

Normalization for protein loading,
Merging data across slides

Supervised or un-supervised
hierarchical clustering analysis

Excel file of protein expression
and modification
(relative concentration)



Further analysis
by Bioinformatics